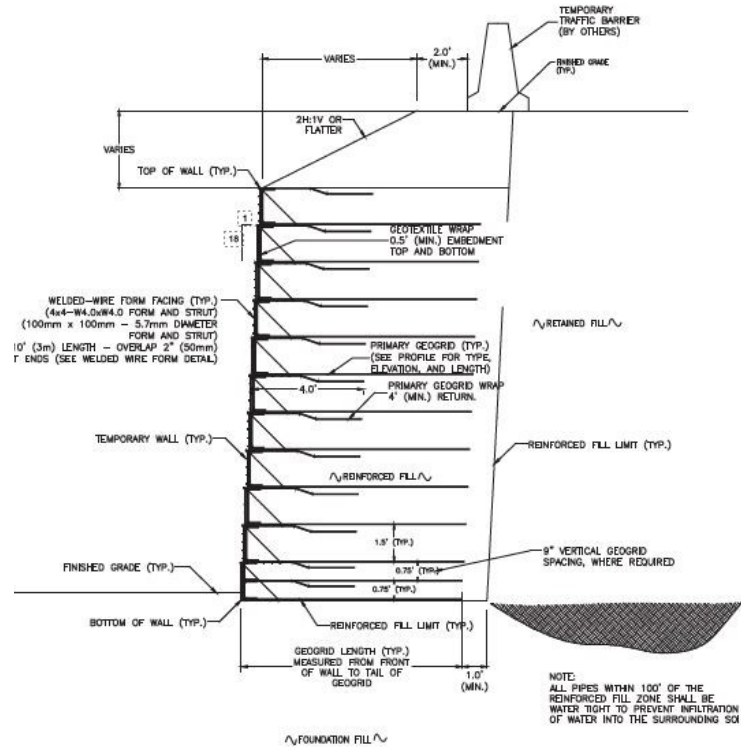


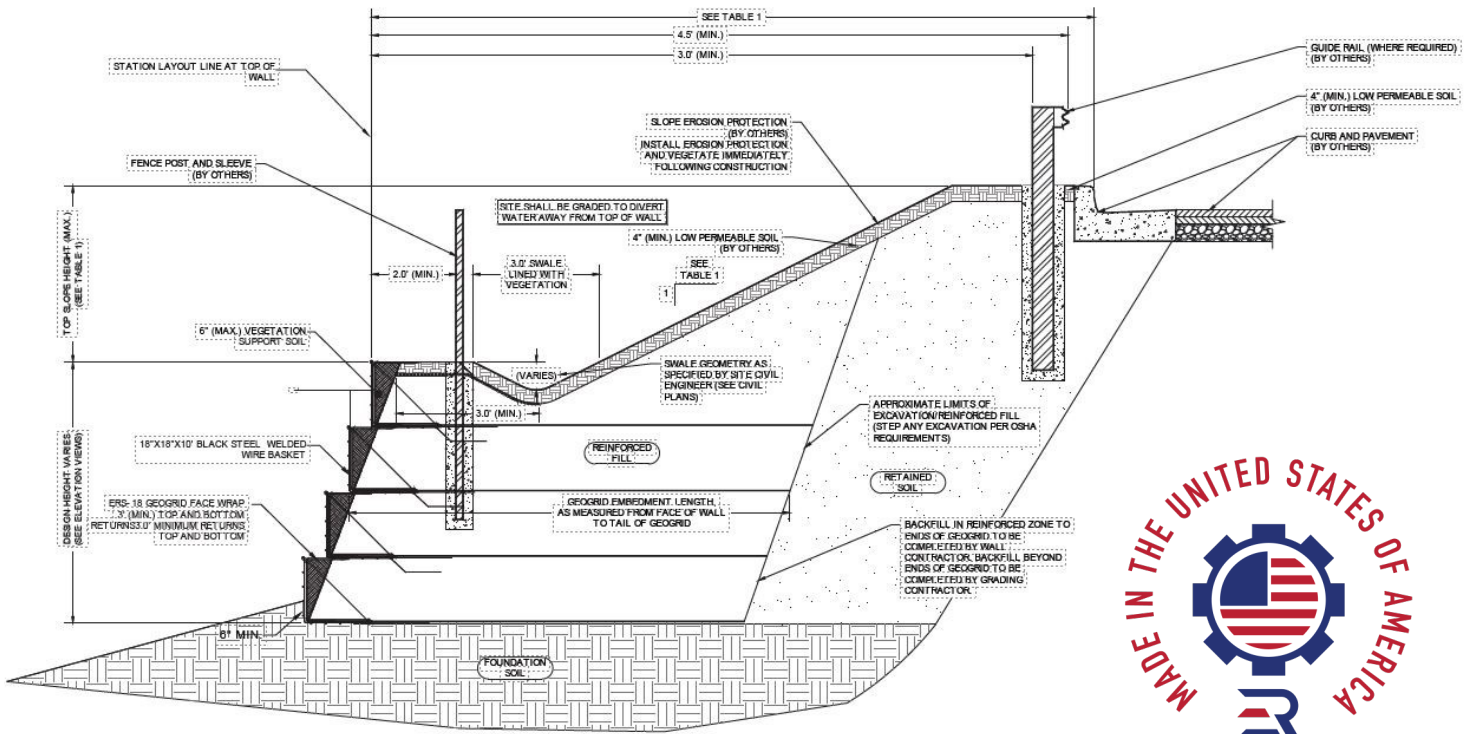
Black Steel Welded Wire Forms, or Wire Baskets are used in many different applications such as temporary MSE structures, wetlands, ponds, and areas where the earth structure needs to blend well into the landscape.

Wire Forms are more cost effective than cast-in-place, designed to shift and settle without compromise, and offer a time savings in installation vs. other retained earth systems.

Wire Forms are an alternate solution to traditional retaining walls when differential settlement is expected in the foundation soils.



TYPICAL TEMPORARY WALL CROSS SECTION
SCALE: NONE



TYPICAL CROSS SECTION - TOP SLOPE W/ SWALE SCALE: NONE

Earth Retention, LLC

231 Rope Mill Parkway | Woodstock, GA 30188

Phone: (678) 903-3614 | Email: contact@ersdb.com | earthretention.com