



Earth Retention

Design + Supply + Support



WELDED WIRE FORMS WALLS & SLOPES



Welded Wire Forms are a versatile and cost-effective solution for Mechanically Stabilized Earth (MSE) structures for all types of retaining wall applications. They are especially well suited for retaining walls in and around wetlands, ponds, and areas of expected settlement. These structures integrate seamlessly with the landscape, offering a time-saving alternative to traditional retaining walls. They are more cost effective than segmental retaining walls and designed to allow for more differential and total settlement.

APPLICATIONS



- Retaining walls in and around wetlands & ponds
- Temporary retaining walls
- Bridge abutments
- Road phasing
- Load transfer platforms
- Vegetated walls
- Reinforced soil slopes



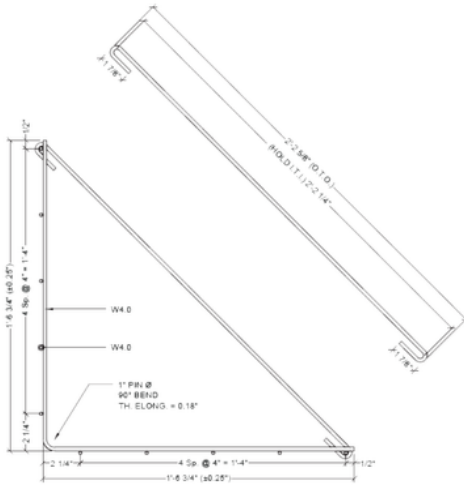
PERFORMANCE

- Easy Installation
 - Each form is 15 sqft of wall face area and weighs approximately 26 lbs
- Cost-Effective Shipping
 - The ability to transport as much as 20,000 sq ft per flatbed truck
- Structural Resilience:
 - Able to withstand greater total and differential settlement than other types of MSE structures
- Economic Choice:
 - Are more cost effective than other types of MSE structures

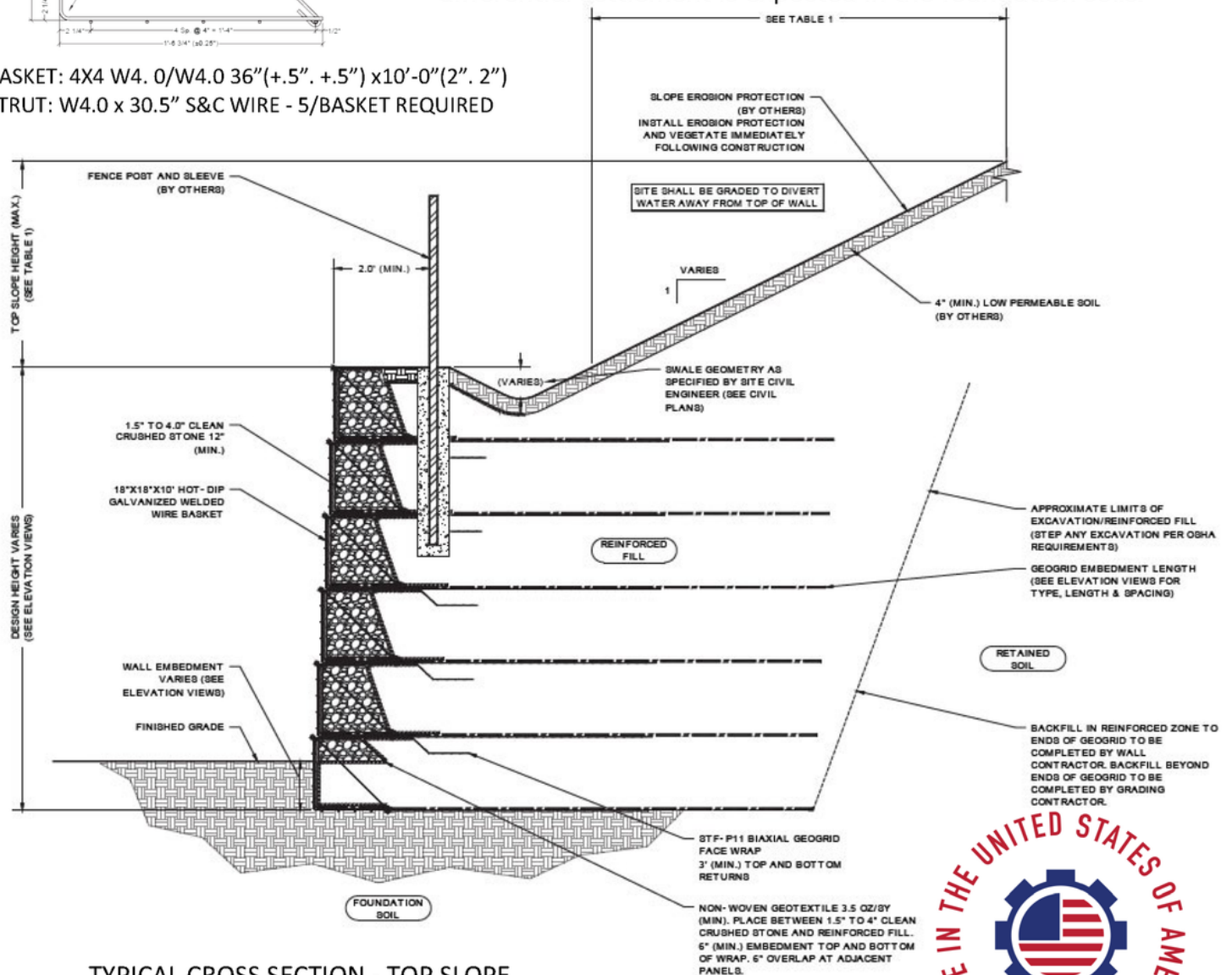


HOT DIPPED Welded Wire Forms

Hot Dipped Welded Wire Forms, or Wire Baskets are used in many different applications such as temporary MSE structures, wetlands, ponds, and areas where the earth structure needs to blend well into the landscape. Wire Forms are more cost effective than cast-in-place, designed to shift and settle without compromise, and offer a time savings in installation vs. other retained earth systems. Wire Forms are an alternate solution to traditional retaining walls when differential settlement is expected in the foundation soils.



BASKET: 4X4 W4.0/W4.0 36\"(+.5\". +.5\") x10'-0\"(2\". 2\")
STRUT: W4.0 x 30.5\" S&C WIRE - 5/BASKET REQUIRED



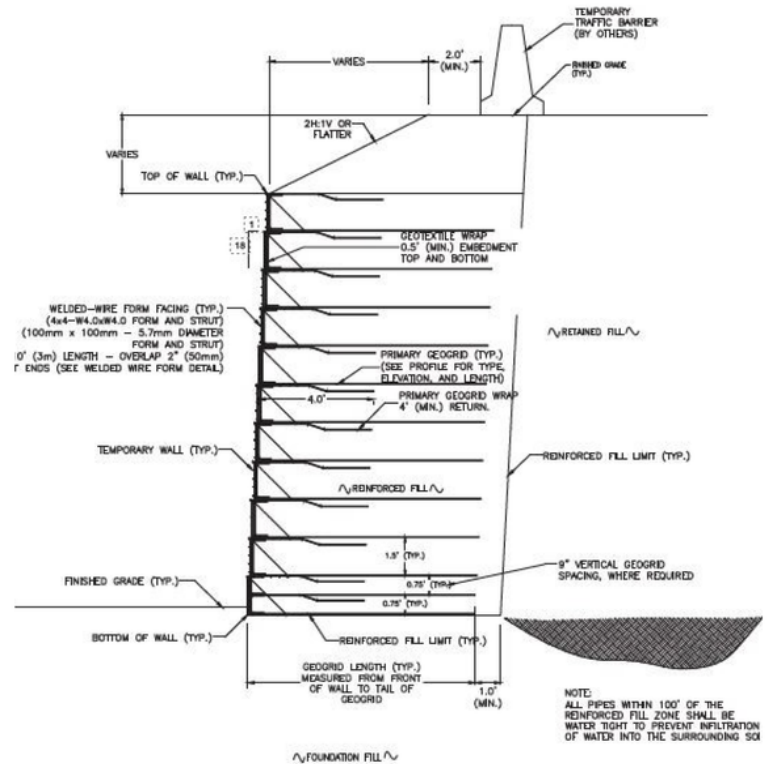
TYPICAL CROSS SECTION - TOP SLOPE
SCALE: 1:20



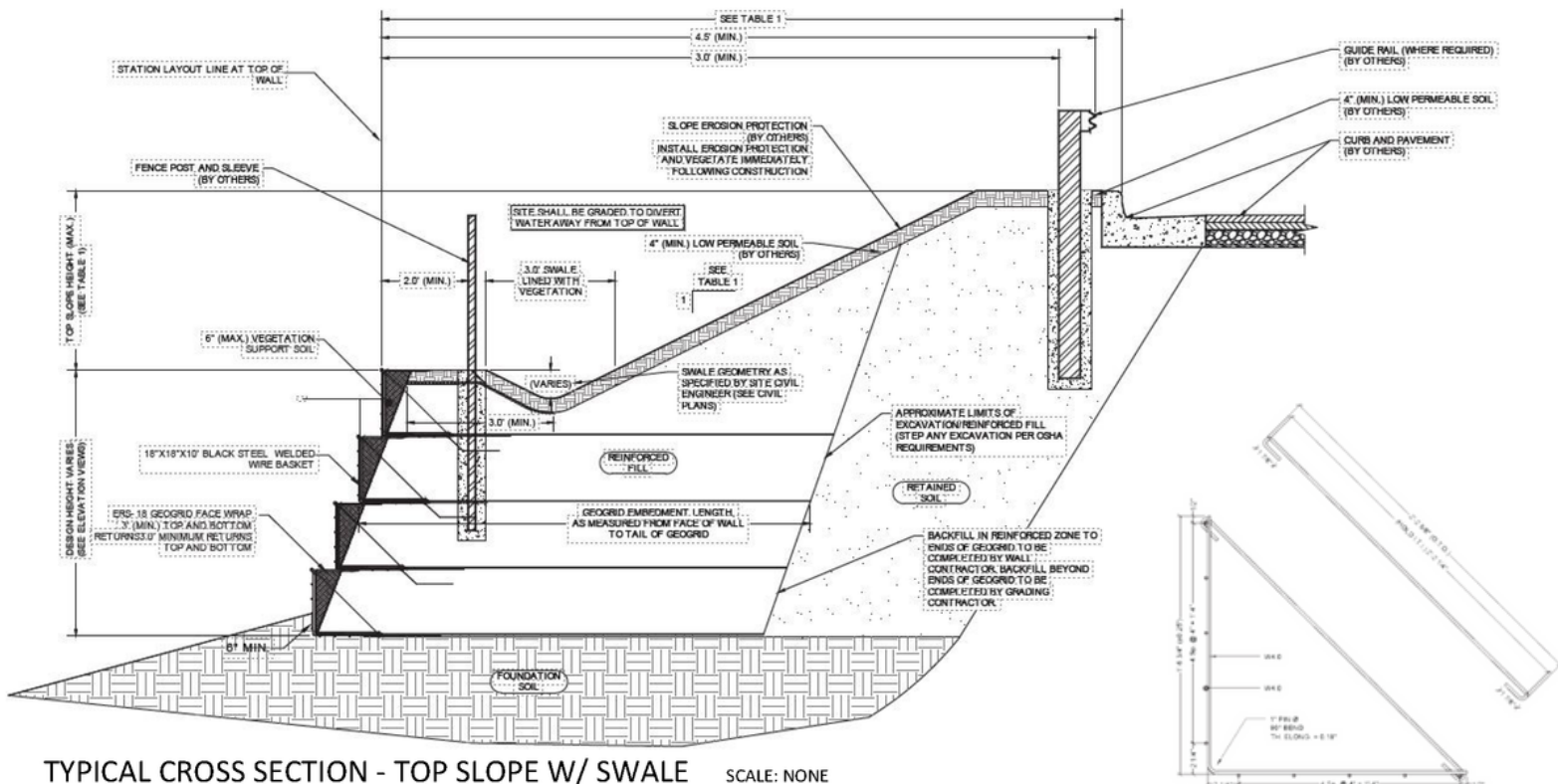
Black Steel Welded Wire Forms, or Wire Baskets are used in many different applications such as temporary MSE structures, wetlands, ponds, and areas where the earth structure needs to blend well into the landscape.

Wire Forms are more cost effective than cast-in-place, designed to shift and settle without compromise, and offer a time savings in installation vs. other retained earth systems.

Wire Forms are an alternate solution to traditional retaining walls when differential settlement is expected in the foundation soils.



TYPICAL TEMPORARY WALL CROSS SECTION
SCALE: NONE



TYPICAL CROSS SECTION - TOP SLOPE W/ SWALE SCALE: NONE

I-4 EXPANSION PROJECT

ORLANDO, FL



Many large-scale construction projects require temporary structures to be installed for support and worksite access during the course of the project.

The Florida Department of Transportation project "I-4 Ultimate" required several temporary retaining walls for the reconstruction and expansion of 21 miles of I-4 in and around Orlando, Florida.



The Florida Department of Transportation required temporary wall structures for the reconstruction and expansion of 21 miles of I-4 in and around Orlando, Florida.



The engineering team at Earth Retention provided designs and supplied materials for the Skanska-Granite-Lane (SGL) Design Build Team.

KENNESAW MARKET PLACE

KENNESAW, GA



Kennesaw Marketplace, an ambitious urban retail and mixed-use development located in Cobb County, Georgia, presented formidable geotechnical challenges, including soft soils reaching depths of up to 40 feet, wetlands, and an adjacent quarry. The realization of this project demanded innovative thinking and resourceful strategies to overcome the perceived risks and complexities. Earth Retention took on the challenge with determination, successfully providing cutting-edge Earth Retention Systems that enabled the development of this thriving marketplace.



The development site of Kennesaw Marketplace, overseen by Fuqua Development, was situated at the intersection of US Highway 41 and Barrett Parkway. It was surrounded by a decades-old quarry, soft soils, and wetlands, posing significant geotechnical complexities. Other engineering firms declined the project, citing risks and potential insurmountable challenges related to excessive ground settlement. Earth Retention, however, embraced the opportunity and demonstrated its commitment to delivering site-specific solutions, leveraging its comprehensive industry knowledge and advanced tools to provide a cost-effective approach that met the owner's budget.

Earth Retention secured the bid for the Kennesaw Marketplace project, partnering with Contour Retaining Walls, one of Atlanta's premier retaining wall contractors. The project team employed a two-stage surcharge approach, utilizing primary and secondary geogrid materials along with a flexible welded wire retaining wall system, supplied by Earth Retention. This approach expedited the expected settlement of soft soils, ensuring the stability and longevity of the retaining walls.

The retaining walls were constructed using a multi-layered geogrid with five different tensile strengths. The integration of this high-performance geogrid provided reinforcement to the newly placed soils, effectively distributing pressure and mitigating excessive soil differential settlement. Earth Retention's engineering team made the development of Kennesaw Marketplace possible by assuring the structural integrity of the site's retaining walls.

Fuqua Development demonstrated its commitment to Kennesaw Marketplace, envisioning it as a regional mixed-use development anchored by renowned establishments such as Whole Foods Market, regional sporting goods stores, restaurants, and specialty retailers. Their forward-thinking approach, coupled with Earth Retention's innovative engineering solutions, resulted in a best-in-class development that defied conventional limitations.



DESIGN+SUPPLY+SUPPORT

YOUR PARTNER FOR EXPERT ENGINEERING & MATERIALS

At Earth Retention, we have a team of experienced and highly skilled engineers specializing in creating designs to meet your specific needs.

Licensed in 39 states, our in-house engineering is 100% focused on the DESIGN of earth retention structures. We SUPPLY all American-made retaining wall construction materials (geogrid, geotextiles, and welded wire forms) and offer full sales and engineering SUPPORT during the entire bid and construction process.

