



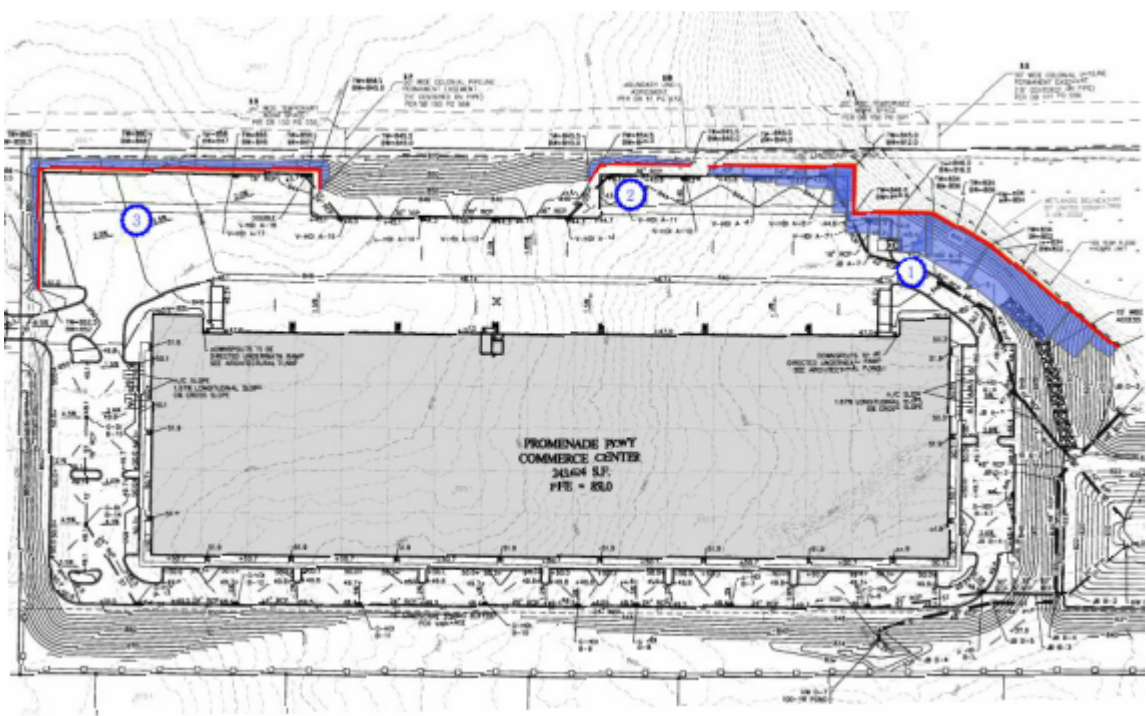
## Transforming Terrain: Earth Retention's Retaining Wall Solutions in Fayetteville, GA



When developing a new distribution center, maximizing space and overcoming site challenges is often the key to success. In Fayetteville, Georgia, a complex site with wetlands and steep grade changes presented significant obstacles.

At the core of the solution is an 18,000-square-foot hot-dipped galvanized welded wire form retaining wall, designed and supplied by Earth Retention. This wall, which reaches a maximum height of 42 feet, was engineered to "raise the ground," transforming the wetland area into stable, usable real estate.

Additionally, Earth Retention designed two Segmental Retaining Walls (SRWs) to balance the site and create space for the necessary parking. These walls were strategically designed to seamlessly integrate functionality and structural stability, maximizing the available space while maintaining long-term durability.



*Want to learn how Earth Retention can help elevate your next project?  
Let's talk about solutions tailored to your needs.*

*With the right partner, any site can become a foundation for success.*

[Contact Us to Learn More!](#)

## CLIENT TESTIMONIAL

"We have found that working with the team at Earth Retention continues to be an excellent overall experience. With their knowledge and understanding of the intricacies associated with DOT projects along with their responsiveness and attention to detail they make our job much easier"

Rob Coffee | Structural Manager  
Shirley Contracting Company, LLC

## PRODUCT SPOTLIGHT: WELDED WIRE FORMS

Welded Wire Forms are used for a variety of project solutions. These materials are typically used to construct the rigid facing of temporary MSE structures or within wetlands, ponds, or other areas where the earth structures have a higher risk of settlement while blending into the landscape. Welded Wire forms are used in many different applications such as temporary MSE structures, wetlands, ponds, and areas where the earth structure needs to blend well into the landscape. They are more cost effective than cast in place walls, designed to shift and settle without compromise, and offer a time savings in installation vs. other retained earth systems. They are an alternate solution to traditional retaining walls when differential settlement is expected in the foundation soils.



Our galvanized wire forms are not only manufactured here in the US, but they are certified to ASTM standards. If you buy or specify galvanized baskets, ask for material certifications. Many importers will not certify their baskets.



[Download Our Welded Wire Form Brochure to Learn More](#)

Follow Us On

